

APPLICATION

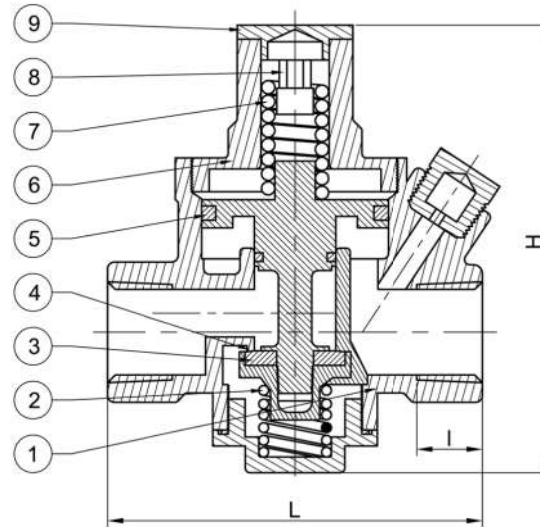
Suitable for water, oil, gasses and non-abrasive media
(Refer to corrosion resistance table for valve materials selection).

SPECIFICATION

Spring Range	1 to 6 Barg Adjustable
Factory Preset Pressure	3 Barg
Pressure Rating	PN16
Working Temperature	Up to 80°C
End Connection	Screwed End BSPT

MATERIALS

PARTS	FIG. 86
1. Body	Brass
2. Spring Seat	Brass
3. Disc Seal	PTFE
4. Valve Seat	Brass
5. Gasket O-Ring	EPDM
6. Bonnet	Brass
7. Spring	Stainless Steel SS304
8. Adjustment Screw	Brass
9. Cap	Brass



PRESSURE REDUCING VALVE

BRASS



FIG 86

Conforms: EN 1567

DIMENSIONS (mm)

Size (mm)	L	I	H
15	79	13.5	93
20	81	14	93
25	87	14	115
32	90.5	16.8	118
40	103	16	151
50	118	21	180

*The specifications are subject to change without further notice